



# Japanese Language Immersion Course 2023

## Course Dates :

Term A: **May 15th to June 9th, 2023**

Term B: **June 19th to July 14th, 2023**

\*Each term is limited to a maximum of 10 students  
\*There is an intersession break between Term A and B.

**Application Period :**  
**January 6th to February 24th, 2023**

## How to Apply & Application Forms:

[https://www.dwc.doshisha.ac.jp/english/school\\_life/international\\_exchange\\_system/international\\_exchange\\_system05/concentrated\\_course](https://www.dwc.doshisha.ac.jp/english/school_life/international_exchange_system/international_exchange_system05/concentrated_course)

### Division of International Affairs

■ **Imadegawa campus (JLIC is held)**  
Teramachi-nishi-iru, Imadegawa-dori,  
Kamigyo-ku, Kyoto 602-0893 Japan  
Telephone: +81-(0)75-251-4158  
Fax: +81-(0)75-251-4160  
e-mail: kokusa-i@dwc.doshisha.ac.jp

■ **Kyotanabe campus**  
Kodo, Kyotanabe-shi, Kyoto 610-0395 Japan  
Telephone: +81-(0)774-65-8458  
Fax: +81-(0)774-63-5355  
e-mail: kokusa-t@dwc.doshisha.ac.jp



**Check out this video to learn more →**



**DWCLA**  
DOSHISHA WOMEN'S COLLEGE OF LIBERAL ARTS

## JLIC Content :

- Japanese language courses (two levels)
- Japanese cultural experiences, field trips, club visits, and other interactive programs with DWCLA students

## Qualifications:

- Be at least 18 years old (as of April 1st, 2023)
- Be a female university/college student or graduate
- Have at least half year of Japanese language study experience

## Program & Accommodation Fees :

Program fee	Accommodation fees		Total
135,100 yen/term	Mukaijima Gakusei Center (No meals)	1 term : 49,000 yen	184,100 yen
		2 terms : 109,000 yen	379,200 yen
	Homestay (Two meals per day)	1 term : 60,000 yen	195,100 yen
		2 terms : 134,000 yen	404,200 yen

\*Decisions on accommodation will be made based on availability and each participant's request.

## Financial Aid :

Grants of 60,000 yen per term are available for participants from affiliated institutions and ASEAN-member countries. Grants will be automatically allocated for their accommodation and meals.

## Five Features of the JLIC :

1. Small class sizes
2. Entry level students are welcome
3. Field trips in Kyoto!
4. Intercultural communication sessions with DWCLA students
5. Two accommodation options available (Off-Campus Dormitories or Homestay)

## Students' Comments

### Term A&B

**M. D.**  
(Chatham University)

"Participating in JLIC was a once in a lifetime experience. My Japanese improved dramatically in just two months. Because of the truly immersive experience, I learned how to use Japanese both in the classroom and in everyday life. By the end of the program, I had confidence that I never could've imagined when I started learning Japanese. With the help of the DIA Office and Doshisha students, I was able to visit places in Kyoto and around Japan. From wearing kimono to making wagashi, I learned so much about Japanese culture and art. I met amazing people and made memories that I will never forget. I recommend JLIC to anyone who is looking to improve their Japanese in a short time and have a true immersion experience in Japan."

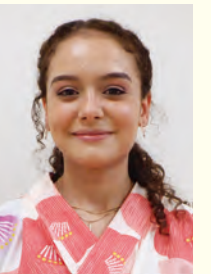
Gion Matsuri was wonderful! I cannot wait to return to Kyoto someday and see even more. Thank you so much for all your help this summer. I could not have had such an amazing experience without you!! ありがとうございます！



### Term B

**A. C.**  
(University of Leeds)

Participating in the 2022 JLIC program was an amazing experience. I have made so many special memories that I will never forget. The program offers a safe learning environment where you are free to make mistakes and learn from them without judgment. The teachers made language learning fun and engaging and incorporated Japanese culture and history into our lessons. In just one month, I have noticed my Japanese speaking skills have greatly improved, along with my confidence when speaking Japanese. The students and staff at DWCLA were extremely kind to us and were always on hand to help, offering genuine and friendly interactions. Alongside learning, we had the chance to go on many exciting field trips and visit places such as Osaka and Arashiyama. We also visited many clubs within the university and partook in numerous activities such as doing ikebana, wearing yukata, and experiencing a traditional tea ceremony. This was a lovely way to learn more about Japanese traditions, and I am extremely grateful for these experiences. I highly recommend the JLIC program to anyone with a desire to improve their Japanese language skills while experiencing Japanese culture.



## Nationalities of Participants (last five years)

